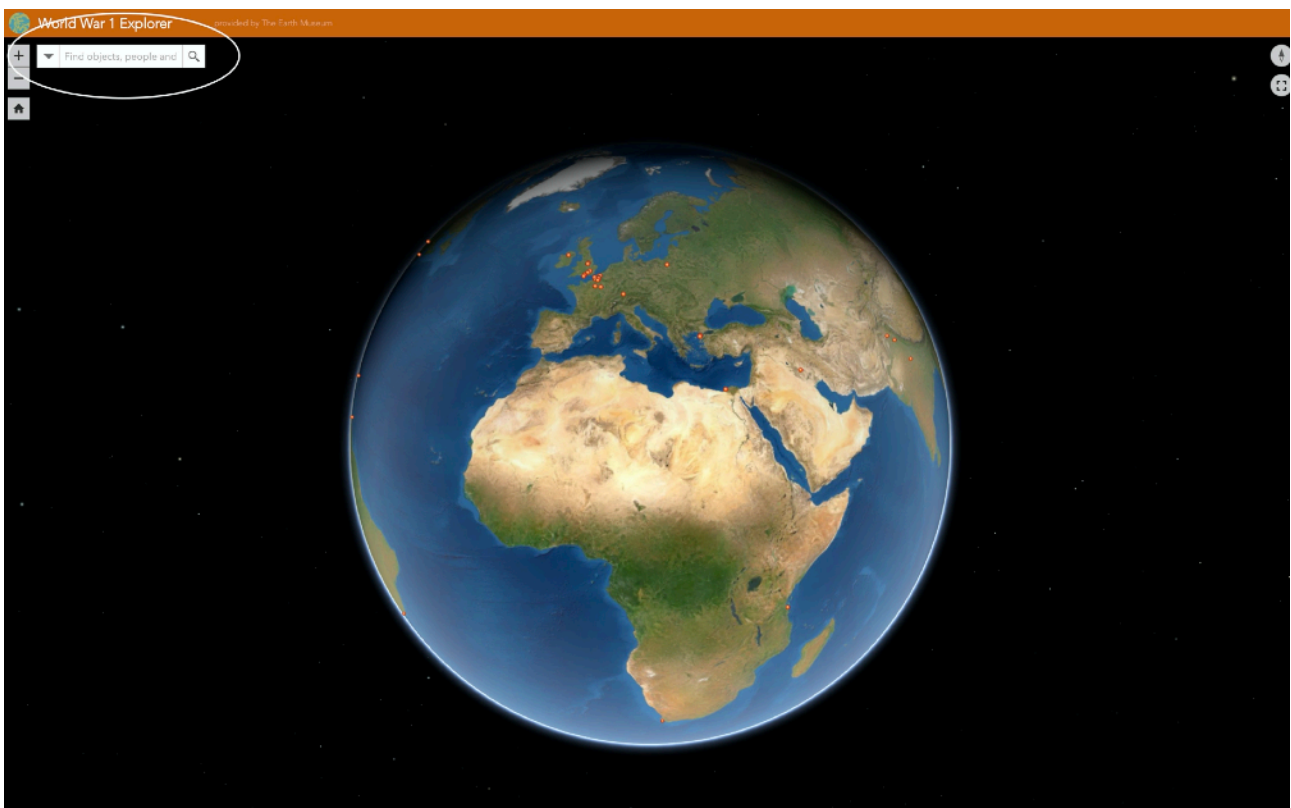


“THE LAST GOODBYE” SESSION 3 QUIZ (with answers)

This quiz has been designed to help you re-cap on your learning over the last 3 weeks about World War 1.

Some of these answers you might be able to remember. For others, you can use the search box on The Earth Museum to help you find the answers (using the words in bold as clues).



QUIZ QUESTIONS

1. In what year was the **Gallipoli** Campaign fought?

1915

2. How many ordinary people had to leave their homes and become **refugees** during World War 1?

10 million



3. Where did soldiers in the British Army **massacre** peaceful protestors, including women and children after World War 1?

Amritsar, India (Jallianwala Bagh)

4. Where in France did the **St John Ambulance Brigade** have a hospital during WW1 to treat soldiers wounded on the Western Front?

Etaples

5. Where was **Private Alexander Reid** killed in battle during WW1?

Potijze, Belgium

6. What marathon did **Cogwagee** win in 1907?

Boston

7. What nationality was the original owner of the **cigarette case** found at Vimy Ridge?

German

8. Which museum in New Zealand has a WW1 **gas mask** in its collection?

Nelson Museum

9. How many members of the **Chinese Labour Corps** lost their lives in WW1 on the Western Front?

3,000

10. How did the SS **Mendi** sink off the Isle of Wight in WW1?

A large cargo ship collided with her in thick fog

Students will need access to good strength broadband, and an up-to-date version of a common desktop browser, ideally Chrome or Firefox. The resource does support most common current iOS and Android mobile devices, although the controls will be different.

Through this website you are able to link to other websites which are not under the control of The Earth Museum. We have no control over the nature, content and availability of those sites.



THE EARTH
MUSEUM