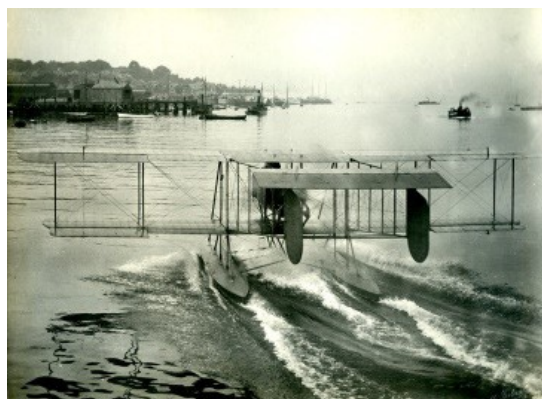




Cowes Classic Boat Museum has two sites: both a short walk from the Floating Bridge. The East Cowes side tells the history of sailing through models and artefacts. The West Cowes side has the real boats! It is recommended that schools visit both sites.

Transport Through Time (KS1)



Children will explore a range of household artefacts placing them on a timeline and looking at how technology and materials have changed within living memory. They will then learn about local innovations in seaplane and boat design within the last hundred years and place photos of these on the timeline, too.

They will also learn how boats communicated with each other in the past and about early radio experiments done by Marconi on the Isle of Wight. They will find out about the use of Marconi's wireless on The Titanic and practice using a torch to signal SOS.

Curriculum Links: History, Science & English

'S.O.S.' Safety At Sea (KS1 & KS2)

At KS1, the pupils will identify what was done to keep people safe at sea in the past and compare it with what is done today. They will also learn about some of the maritime innovations that happened on the Island at the same time that Titanic was being built and about the different jobs on board ship. This will be done through costume, artefacts and roleplay. It will include the role of a wireless officer, using replica equipment to send out an SOS Morse Code message and the use of 'Aldis' signalling lamps.



For KS2, the workshop will be developed into how and why safety improved - and pupils will consider the technology that made these developments possible. As part of the workshop pupils will take part in activities to help them learn about safety at sea in the past, including signalling and safety equipment. They will also explore the exhibits in the museum, including interactive exhibits to learn about knots and pulleys.

We recommend a visit to the Boat Shed Museum in West Cowes as part of this trip where pupils can see a folding lifeboat similar to the ones on The Titanic, as well as the aerial lifeboat invented in Cowes, the Bembridge lifeboat from the 1930s and a life raft.

Curriculum Links: History, Science,



Education Contact: Estelle Baker

07813021486 | estelle.baker@iow.gov.uk

Classic Boat Museum, Columine Road, East Cowes, IW, PO32 6EZ

and 117A Medina Yard, Thetis Road, Cowes, IW, PO31 7DJ

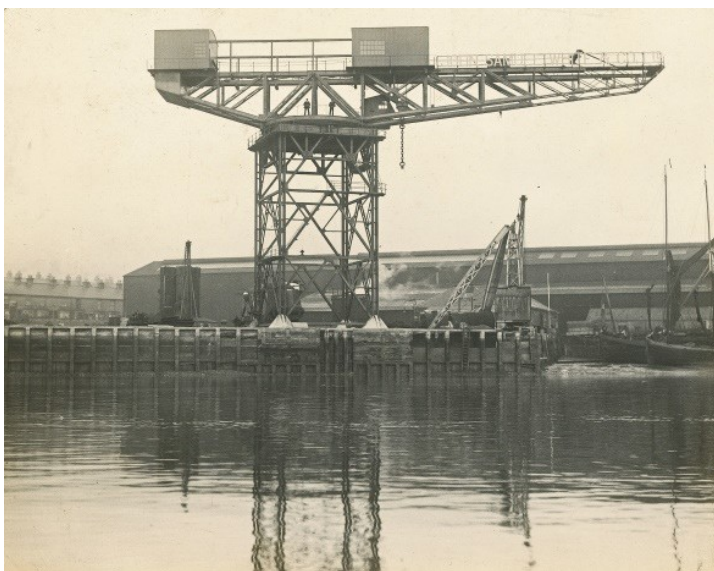


Transport Through Time (KS2)

The workshop will be the launching point for a study tracing how several aspects of national history are reflected in the locality - or an aspect of history that is locally significant. Pupils will learn about the Island's maritime innovations over the last 150 years using the Museum's collections and get hands-on with the exhibits.

They will also learn about local boat designers and buoyancy through participating in a Lego boat building challenge. They will find out about Marconi's pioneering work on the Island, how Morse Code was used on ships and practice SOS in Morse Code. There will also be the opportunity to sketch museum exhibits.

Curriculum Links: History, Science, English & Citizenship



Local Study: Incredible Isle of Wight Innovations (KS3)

The pupils will explore how inventions developed on the Island helped Britain win World War One. Pupils will assess the importance of these inventions and explore how they were linked to the wider world. They will also find out about four Islanders who were affected by the war, through the use of original artefacts, archives and replica costume.

Curriculum Links: History & Science

Education Contact: Estelle Baker

07813021486 | estelle.baker@iow.gov.uk

Classic Boat Museum, Columine Road, East Cowes, IW, PO32 6EZ

and 117A Medina Yard, Thetis Road, Cowes, IW, PO31 7DJ