



Isle of Wight Shipwreck Centre & Maritime Museum The Shipwreck Centre, in Arreton, is home to the Isle of Wight's most extensive collection of Maritime Heritage: a fascinating collection of items recovered from ships lost in the waters off the Island. There is also a stunning selection of items from the world of diving, both old and new, which illustrate how we explore the world beneath the sea. The Shipwreck Centre's artefacts provide a marvellous introduction to a wealth of topics including: history, science & innovation, diving, archaeology, museums, maritime conflict and, of course, pirates and smugglers!

Please note: There is no parking for coaches at the Shipwreck Centre: drop-offs only. Our Education Room is designed for 16 students at a time. For workshops which utilise the education room, we suggest that groups are divided into 2 with one carrying out activities in the museum whilst the other participates in the workshop.

Pirates & Smugglers (KS1 & KS2)

We'll discuss pirates and smuggling history in relation to both the Isle of Wight and wider afield. We'll also explore why the Island was the perfect location for smuggling by looking at the geography and hazards at sea. Activities include drawing pieces of eight and finding parrots hidden throughout the museum. This session is designed for our younger audiences, however, is fully adaptable for all age groups with age appropriate activities and learning.

Curriculum Links: History & English



The Tragedy Of The Titanic (KS1 & KS2)

This session has been put in place to teach students about The Titanic, through its loss & legacy. It offers work with a range of skills including: English, History and Science as well as basic skills such as speaking and listening. The students will work with a range of different resources such as newspapers, pictures and posters promoting the ship from 1912, which have been replicated for educational uses.

The students will each be given a 'Boarding Pass' which is a replica of the original one which would be given to real passengers. They will also receive a work booklet with Titanic related information and different activities. These booklets replicate the information which passengers were given as a means of promoting the ship's maiden voyage. This session is adaptable to any age group. For older students, additional activities examine the wreck site and excavations.

Curriculum Links: History, Science & English

Maritime Archaeology (KS1 & KS2)

This session explores the work of the maritime archaeologist and how maritime archaeology has developed. We'll look at the environments in which we work, sites we've explored, and handle equipment used on excavations underwater. We'll also look at footage of dives and discuss, and handle, the dive equipment that we use today. Students will also be able to explore the science behind diving and the challenges of working in watery environments. This session is adaptable to any age group and can also be combined with any other session.

Curriculum Links: History, Science & English

Education Contact:

01983 533079 | museum@maritimearchaeology.org

The Shipwreck Centre, Arreton Barns, Main Road, Arreton,

IW, PO30 3AA



The History Of Diving (KS1 & KS2)

Most visitors to the Museum are surprised to learn that we've been diving for over 2,000 years! Through the collections, we'll explore how and why diving developed and see how technology has changed over time. We'll compare the historic dive kit in the Museum with the new, and more familiar, dive kit used today. Students will have the opportunity to handle modern dive kit. This session is adaptable to any age group and includes artefact handling. **Curriculum Links: History, Science & English**

Submerged Prehistory (KS1 & KS2)

Through the artefacts and research carried out by the Maritime Archaeology Trust, we'll explore an exciting stone age archaeological site (Bouldnor). Dated to the Mesolithic and monitored for over 20 years, this submerged underwater landscape has been helping us to redefine what we know of this time. The session will include artefact handling and exploring how these help us to understand a site. This session is adaptable to any age group. **Curriculum Links: History, Science & English**

Forgotten Wrecks Of The First World War (KS1 & KS2)

With over 1,100 wartime wrecks along England's South coast alone, WW1 has left a rich legacy of bravery & sacrifice. We'll explore this legacy through the Museum's collection and footage of dives in the Solent to view these amazing vestiges of history. We'll look at how we research these wrecks and understand what they can teach us of war. The session will also look at how shipwrecks form and how we use this information to piece together the last moments before a loss. The session will include artefact handling and exploring how objects help us to understand a site. **Curriculum Links: History & English**

The Art Of The Museum / Artefact Handling (KS4)

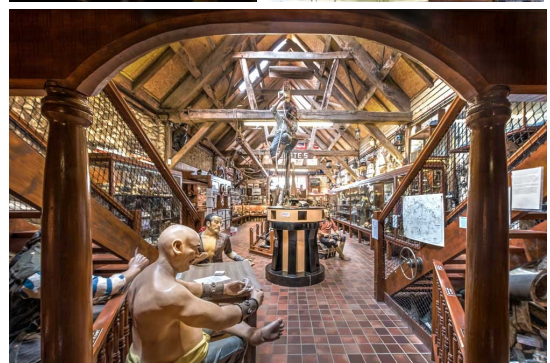
This session is for older students visiting the Museum and is perfect for smaller groups. We'll look at how museums work and explore the work behind the scenes. This will include photographing objects and assessing their condition as part of building a digital archive of the collection. We'll also discuss how an exhibition is developed and the more practical elements involved in the day to day running of a museum.

This session has a huge potential for research and development in collaboration with the Museum. The Museum would be happy to consider a museum or gallery 'takeover' as part of this session. Please contact the Education & Outreach Officer to discuss. All equipment will be provided, however, students are more than welcome to bring their own equipment if preferred. **Curriculum Links: History, Science & English**



Bespoke Sessions

A number of bespoke sessions are available including 'Myths, Mermen & Make-Believe' and 'The Health of Our Seas - Plastic Pollution'. We are also happy to discuss art connections within the museum for those students working towards Arts Awards. Please contact us to discuss.



Education Contact:

01983 533079 | museum@maritimearchaeology.org

The Shipwreck Centre, Arreton Barns, Main Road, Arreton,

IW, PO30 3AA