

1700 – 1900 KS2 History Explorer Card Version

- Print this document onto A3 card
- Cut out the individual object cards and laminate them
- Create a chronology on the classroom wall
- Create an Island map on the classroom wall or table
- Use in groups or as a class
- Suggested activities:
 - Place cards face down on the table and mix them up
 - Each student takes turns to
 - pick a card and read it out loud, describing the object from the picture
 - Write down the name of the object on the card on the chronology
 - Place the card on the right location on the map
 - After every student has taken a card, each student chooses an object to draw a picture of and places their picture on the chronology wall
 - Invite students to talk about their favourite object and why



For Isle of Wight Museums and Schools





What am I?

Oil painting of the Royal Yacht reviewing the fleet at Spithead

What period in history am I from?

C19th (1872)

Where is my Island connection?

Ryde and Spithead, IoW

What am I made of?

Cotton (canvas) and paint

Who made or used me?

Painted by the artist Arthur Wellington Fowles

What was I used for?

To sell and be displayed on walls of a wealthy home, office or public building

Where am I now?

Isle of Wight Heritage Services



What am I?

Photograph showing Seaview Pier

What period in history am I from?

C19th (1881)

Where is my Island connection?

Seaview, IoW

What am I made of?

Paper (photographic)

Who made or used me?

The pier was made by the Seaview Pier Company

What was I used for?

To attract day-trippers from the mainland to this part of the Island

Where am I now?

Isle of Wight Heritage Services



What am I?

Photograph of Blanche Coules Thornycroft in the garden at home

What period in history am I from?

C19th

Where is my Island connection?

Bembridge, IoW

What am I made of?

Paper (photographic)

Who made or used me?

Probably taken by someone in her family

What was I used for?

Showing Blanche carrying out scientific experiments testing how different shaped boat hulls travelled in water

Where am I now?

Classic Boat Museum



What am I?

Pistol

What period in history am I from?

C18th (1796)

Where is my Island connection?

Shipwreck on the Bembridge Ledge, IoW

What am I made of?

Wood and metal

Who made or used me?

Used by the crew on board the Henry Addington ship

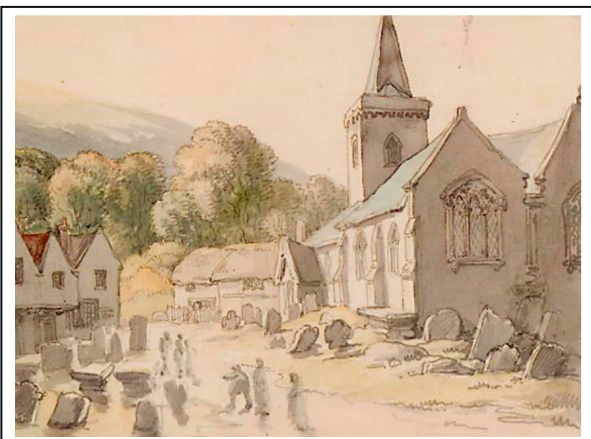
What was I used for?

For personal protection

Where am I now?

Shipwreck Centre





What am I?

Watercolour painting

What period in history am I from?

C18th (1791)

Where is my Island connection?

Brading Church, IoW

What am I made of?

Paper and paint

Who made or used me?

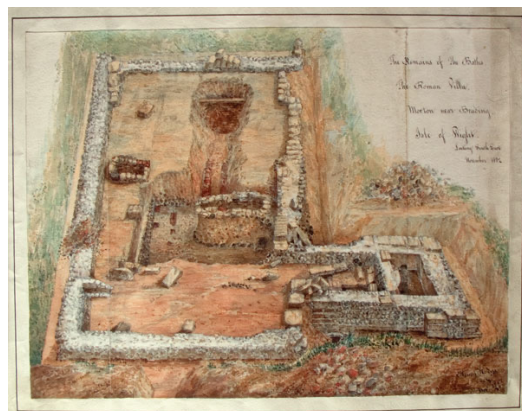
Painted by the artist Thomas Rowlandson

What was I used for?

To remember what he saw on his travels before the days of photography

Where am I now?

Isle of Wight Heritage Services



What am I?

Watercolour of an excavated bath house

What period in history am I from?

C19th (1881)

Where is my Island connection?

Brading Roman Villa, IoW

What am I made of?

Paper and paint

Who made or used me?

Painted by Captain John Thorp

What was I used for?

To record what Thorp discovered when excavating the villa

Where am I now?

Brading Roman Villa



What am I?

Photograph showing the Isle of Wight Rifles Volunteers

What period in history am I from?

C20th (c.1900)

Where is my Island connection?

Sandown, IoW

What am I made of?

Paper (photographic)

Who made or used me?

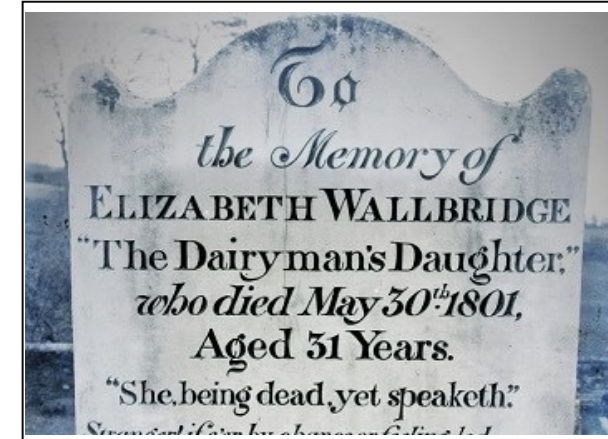
An early photograph taken by James Dore, a local photographer

What was I used for?

To record events happening on the Isle of Wight

Where am I now?

Isle of Wight Heritage Services



What am I?

Gravestone for Elizabeth Wallbridge, 'The Dairyman's Daughter'

What period in history am I from?

C18th – C19th (1770-1801)

Where is my Island connection?

Arreton, IoW

What am I made of?

Stone

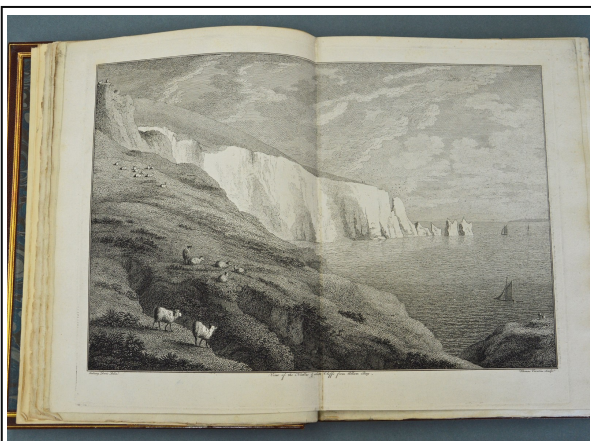
Who made or used me?

To mark the place where Elizabeth Wallbridge, a domestic servant made famous by a story called 'The Dairyman's Daughter', is buried

Where am I now?

Arreton Churchyard





What am I?

A book called 'History of the Isle of Wight'

What period in history am I from?
C18th (1781)

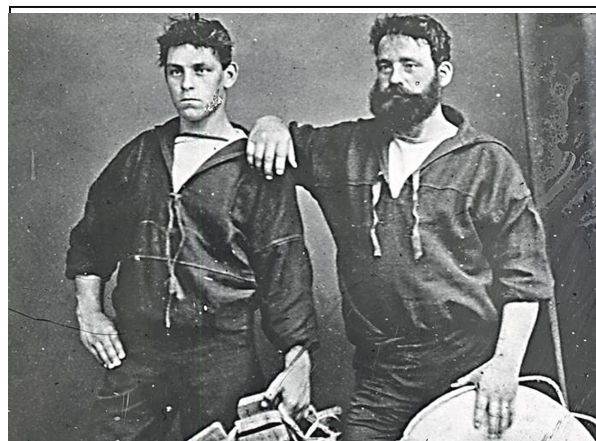
Where is my Island connection?
Appuldurcombe House, IoW

What am I made of?
Paper

Who made or used me?
Book was written by Sir Richard Worsley, having been started by his father

What was I used for?
To record their knowledge of the history of the Island

Where am I now?
Isle of Wight Heritage Services



What am I?

Photograph showing Benjamin Cuddiford and Sydney Fletcher

What period in history am I from?
C19th (1878)

Where is my Island connection?
Off Dunnose Point, IoW

What am I made of?
Paper (photographic)

Who made or used me?
Taken by a studio photographer

What was I used for?
Marking the survival of these 2 people from a shipwreck in which 364 men died

Where am I now?
Isle of Wight Heritage Services



What am I?

A piece of brown lace

What period in history am I from?
C19th (1836)

Where is my Island connection?
Blackgang beach, IoW

What am I made of?
Cotton, silk or linen

Who made or used me?
Belonged to Miss Shore, passenger on the Clarendon when it was wrecked

What was I used for?
From an item of her clothing, possibly a type of headwear (known as a fall)

Where am I now?
Isle of Wight Heritage Services



What am I?

Mace

What period in history am I from?
C15th – C20th

Where is my Island connection?
Newtown town hall, IoW

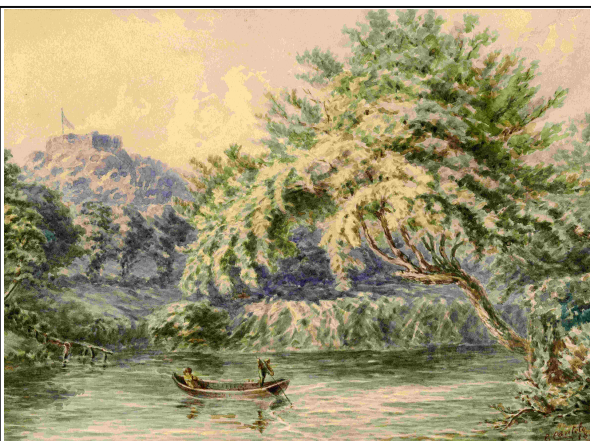
What am I made of?
Metal (silver and gold gilt)

Who made or used me?
The politicians in charge of the town

What was I used for?
To show local people and visitors the importance of Newtown

Where am I now?
Carisbrooke Castle Museum





What am I?

Watercolour painting of Carisbrooke Millpond

What period in history am I from?
C19th (c. 1885)

Where is my Island connection?
Carisbrooke, IoW

What am I made of?
Paper and paints

Who made or used me?
Painted by the artist, Ellen Cantelo

What was I used for?
Ellen built her career as a painter of the countryside and sold her works in London for a living

Where am I now?
Carisbrooke Castle Museum



What am I?

Ashanti Medal

What period in history am I from?
C19th (1896)

Where is my Island connection?
Carisbrooke Castle, IoW

What am I made of?
Metal (bronze)

Who made or used me?
Designed by Princess Beatrice (Queen Victoria's daughter)

What was I used for?
Awarded to troops, and in memory of Beatrice's husband who died on the way home from Africa

Where am I now?
Carisbrooke Castle Museum



What am I?

Sand painting of Carisbrooke Castle

What period in history am I from?
C19th (1840s)

Where is my Island connection?
Carisbrooke, IoW

What am I made of?
Sand

Who made or used me?
Made by a local artist on the Island

What was I used for?
As a holiday souvenir for a visitor to the Island

Where am I now?
Isle of Wight Heritage Services



What am I?

Flag

What period in history am I from?
C19th

Where is my Island connection?
Carisbrooke Castle, IoW

What am I made of?
Gold silk and cotton

Who made or used me?
The Isle of Wight Militia

What was I used for?
To identify their regiment on the battlefield and in ceremonies

Where am I now?
Carisbrooke Castle Museum





What am I?

Plate and spoon

What period in history am I from?

C18th (1792)

Where is my Island connection?

House of Industry (now part of St Mary's Hospital), Newport, IoW

What am I made of?

Metal (pewter and silver)

Who made or used me?

Used by someone (inmate) living in the House of Industry

What was I used for?

For meals of bread, butter, boiled beef, potatoes, green pease, bacon, rice-milk

Where am I now?

Isle of Wight Heritage Services



What am I?

'Blue Jenny' carved wooden figure

What period in history am I from?

C18th – C20th (1761 – 1907)

Where is my Island connection?

Lugley Street, Newport, IoW

What am I made of?

Wood

Who made or used me?

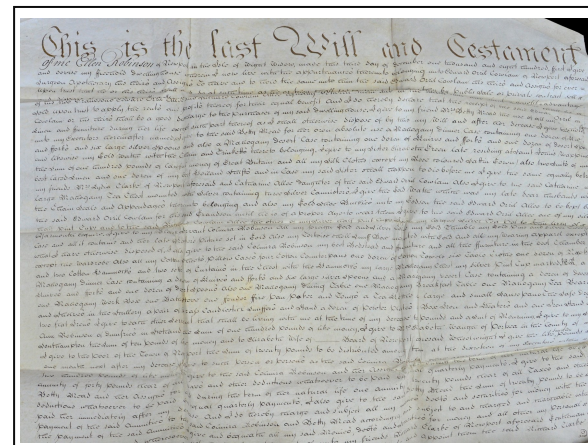
Used by Blue School that educated girls to become domestic servants

What was I used for?

The carving stood above the entrance to the school

Where am I now?

Carisbrooke Castle Museum



What am I?

Will of Ellen Robinson

What period in history am I from?

C19th (1810)

Where is my Island connection?

Newport, IoW

What am I made of?

Paper (document)

Who made or used me?

Newport resident, Ellen Robinson, made her will while she was living

What was I used for?

To say how she wished her house, money and belongings to be shared with friends and family after she died

Where am I now?

Isle of Wight Heritage Services



What am I?

Photographs Shide Hill House residents

What period in history am I from?

C19th – C20th

Where is my Island connection?

Shide, Newport, IoW

What am I made of?

Paper (photographic)

Who made or used me?

Probably taken by Shinubo Hirota, assistant to John Milne and Tone Horikawa (Milne) who lived at Shide

What was I used for?

To record Shide Hill House as home and scientific earthquake observatory

Where am I now?

Carisbrooke Castle Museum





What am I?

The King's or Armada Chest

What period in history am I from?

C18th (1790s)

Where is my Island connection?

East Cowes, IoW

What am I made of?

Wood and metal

Who made or used me?

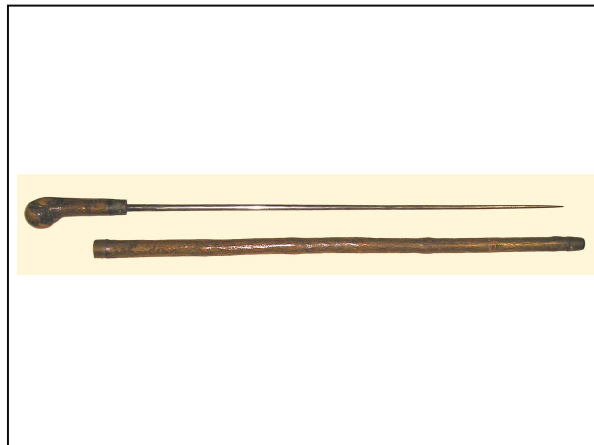
Used by people who worked in the Customs House

What was I used for?

To store monies and valuables collected by HM Customs from trading ships

Where am I now?

Isle of Wight Heritage Services



What am I?

Tuck stick

What period in history am I from?

C18th – C19th

Where is my Island connection?

East Cowes, IoW

What am I made of?

Metal (steel) stick with hazel wood handle

Who made or used me?

Used by people who worked in the Customs House

What was I used for?

To search for smuggled goods hidden in a ship's cargo

Where am I now?

Isle of Wight Heritage Services



What am I?

Regatta programmes

What period in history am I from?

C19th (1871, 1872, 1887)

Where is my Island connection?

Cowes, IoW

What am I made of?

Paper (document)

Who made or used me?

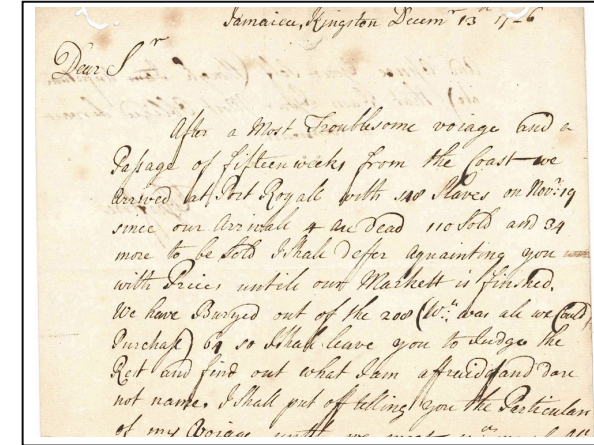
The Cowes Town Regatta Committee

What was I used for?

To advertise the annual local sailing week regatta, now known as Cowes Week

Where am I now?

Isle of Wight Heritage Services



What am I?

Letter written to the Blachford family

What period in history am I from?

C18th

Where is my Island connection?

Osborne House, IoW

What am I made of?

Paper (print and document)

Who made or used me?

Written to the Blachford family who lived at Osborne before Queen Victoria

What was I used for?

A communication about the Blachfords' business taking enslaved African people from Africa to the Caribbean plantations

Where am I now?

Isle of Wight Heritage Services

