

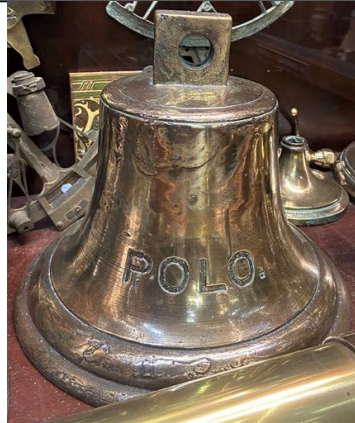
War and Peace Island KS2 History Explorer Cards

- Print this document onto A3 card
- Cut out the individual object cards and laminate them
- Use them to support learning activity in the classroom – either instead of the digital map or as a complementary activity
- These cards can be used, for example, to play the War and Peace Island game as an alternative to using the digital map
- Or they could be shuffled face down on the table, and students invited to pick one, read it out loud to the class, and add a pin and object name label for its location on a set of Island and World maps displayed in the classroom



For Isle of Wight Museums and Schools

Supported using public funding by
 Department for Education |  ARTS COUNCIL ENGLAND



GLOBAL WAR OF EMPIRES

What am I?

Artefacts from the SS Polo shipwreck

What period in history am I from?

World War 1 (1914-18)

Where am I connected to?

Off St Catherine's Head, Isle of Wight

What am I made of?

Various materials

Who made or used me?

Used by the crew on board SS Polo

What was I used for?

Their daily lives at sea

Where am I now?

IoW Shipwreck Centre



GLOBAL WAR OF EMPIRES

What am I?

Memorial plaque

What period in history am I from?

World War 1 (1914-1918)

Where am I connected to?

Gallipoli, Turkey

What am I made of?

Metal (bronze)

Who made or used me?

The family of George Guy

What was I used for?

To remember his life and sacrifice

Where am I now?

Carisbrooke Castle Museum



GLOBAL WAR OF EMPIRES

What am I?

Cooking pot from the SS Mendi

What period in history am I from?

World War 1 (1917)

Where am I connected to?

Lagos, Nigeria

What am I made of?

Copper and tin

Who made or used me?

The chef who cooked for black South African troops killed when the Mendi sank on the way to the Western Front

What was I used for?

To help feed 1,000 men on board

Where am I now?

IoW Shipwreck Centre



GLOBAL WAR OF EMPIRES

What am I?

Photograph of Tone Horikawa

What period in history am I from?

World War 1 (1914-18)

Where am I connected to?

Tokyo, Japan

What am I made of?

Photographic paper

Who made or used me?

For Tone and her husband John Milne

What was I used for?

A record of Tone working on the Isle of Wight with her husband, where she had to wait until after the war ended to return to Japan after John died

Where am I now?

IoW Shipwreck Centre





LOSS AND GRIEF

What am I?

Frame containing leaves and grass from Prince Maurice of Battenberg tomb

What period in history am I from?

World War 1 (1914-1918)

Where am I connected to?

Ypres, Belgium

What am I made of?

Leaves and grass

Who made or used me?

Princess Beatrice (daughter of Queen Victoria)

What was I used for?

To remember her youngest son killed in WW1

Where am I now?

Carisbrooke Castle Museum



LOSS AND GRIEF

What am I?

Saucer from the SS Mendi

What period in history am I from?

World War 1 (1917)

Where I am connected to?

Cape Town, South Africa

What am I made of?

Ceramic

Who made or used me?

Used by crew and soldiers sailing on the Mendi which sank off the Isle of Wight

What was I used for?

As part of a set to drink tea on their voyage to the Western Front

Where am I now?

IoW Shipwreck Centre



1988.134

LOSS AND GRIEF

What am I?

Memorial plaque

What period in history am I from?

World War 1 (1914-1918)

Where am I connected to?

Gallipoli, Turkey

What am I made of?

Metal (bronze)

Who made or used me?

The family of George Guy

What was I used for?

To remember his life and sacrifice

Where am I now?

Isle of Wight Heritage Services



LOSS AND GRIEF

What am I?

10 Rupee note (piece of)

What period in history am I from?

World War 1 (1917)

Where am I connected to?

Kolkata, India

What am I made of?

Paper

Who made or used me?

Crew of the cargo ship, SS Camberwell, which sank off the Isle of Wight

What was I used for?

For use as money when arriving at their destination in India to trade

Where am I now?

IoW Shipwreck Centre





WOMEN AND WAR

What am I?

Photograph of workers at Saunders Roe

What period in history am I from?

World War 1 (1914-1918)

Where am I connected to?

East Cowes, Isle of Wight

What am I made of?

Photographic paper

Who made or used me?

A local photographer

What was I used for?

To record the work of women on the Island

Where am I now?

Carisbrooke Castle Museum



WOMEN AND WAR

What am I?

Hull test models and photo of Blanche Coules Thornycroft

What period in history am I from?

World War 1 (1914-1918)

Where am I connected to?

Dover, UK

What am I made of?

Wood

Who made or used me?

Used by Blanche Coules Thornycroft

What was I used for?

To design ships like HMS Shakespeare which patrolled Dover during WW1

Where am I now?

Classic Boat Museum



WOMEN AND WAR

What am I?

Photograph of Phoebe Brannon

What period in history am I from?

World War 1 (1914-1918)

Where am I connected to?

Egypt

What am I made of?

Photographic paper

Who made or used me?

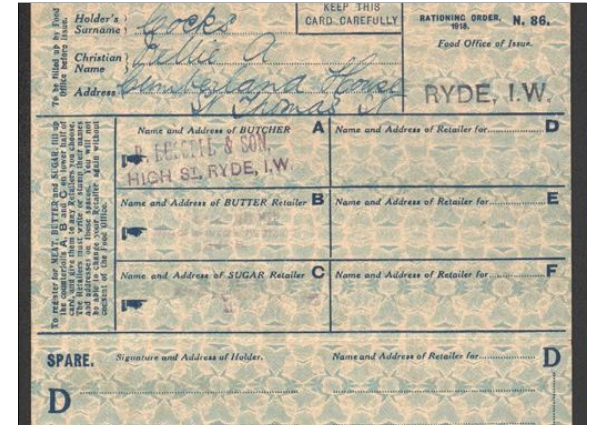
Phoebe Brannon and her family

What was I used for?

To celebrate her being a nurse

Where am I now?

Carisbrooke Castle Museum



IMPACT AT HOME

What am I?

Ration books

What period in history am I from?

World War 1 (1914-1918)

Where am I connected to?

Ryde, Isle of Wight

What am I made of?

Paper

Who made or used me?

Cecil and Nellie Cocks

What was I used for?

To buy meat, butter and sugar

Where am I now?

Carisbrooke Castle Museum





IMPACT AT HOME

What am I?

Postcard from Private E. Warren

What period in history am I from?

World War 1 (1914-1918)

Where am I connected to?

Boulogne, France

What am I made of?

Paper

Who made or used me?

Private E. Warren

What was I used for?

Thanking H. Munroe at J.S. White for sending cigarettes to France

Where am I now?

Isle of Wight Heritage Services



THE EARTH
MUSEUM



IMPACT AT HOME

What am I?

Photographs of the Isle of Wight Rifles

What period in history am I from?

World War 1 (1914-1918)

Where am I connected to?

Yaverland, Isle of Wight

What am I made of?

Photographic paper

Who made or used me?

A local photographer

What was I used for?

To record how the Rifles volunteers trained as soldiers for defence

Where am I now?

Carisbrooke Castle Museum



THE EARTH
MUSEUM



IMPACT AT HOME

What am I?

Fireman's Helmet

What period in history am I from?

World War 1 (1914-1918)

Where am I connected to?

Freshwater, Isle of Wight

What am I made of?

Leather

Who made or used me?

A Rover Scout

What was I used for?

Worn for protection while training to fight fires on the Island

Where am I now?

Isle of Wight Heritage Services



THE EARTH
MUSEUM



MEDICAL CARE

What am I?

Photo of Royal Navy hospital ship, Liberty

What period in history am I from?

World War 1 (1914-1918)

Where am I connected to?

Dardanelles, Turkey

What am I made of?

Photographic paper

Who made or used me?

A photographer recording wartime activities

What was I used for?

To record how the Liberty was loaned by a private owner on the Solent to the RN

Where am I now?

Isle of Wight Heritage Services



THE EARTH
MUSEUM



MEDICAL CARE

What am I?

Embroidered cushion cover

What period in history am I from?

World War 1 (1914-1918)

Where am I connected to?

Gaza, West Asia

What am I made of?

Textile cloth and cotton

Who made or used me?

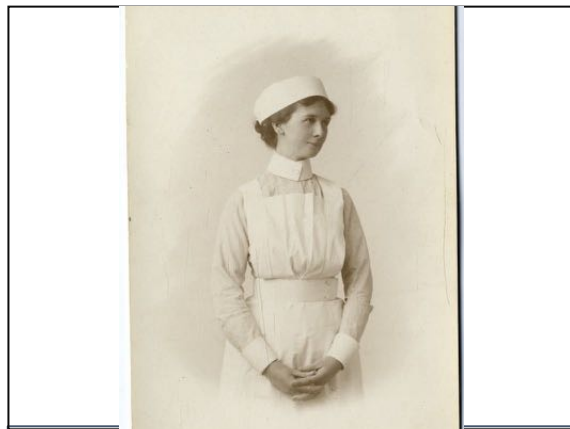
A soldier called Charles recovering in a hospital

What was I used for?

To commemorate the Isle of Wight Rifles campaign in Egypt 1915-16

Where am I now?

Carisbrooke Castle Museum



MEDICAL CARE

What am I?

Photograph of Phoebe Brannon

What period in history am I from?

World War 1 (1914-1918)

Where am I connected to?

Egypt

What am I made of?

Photographic paper

Who made or used me?

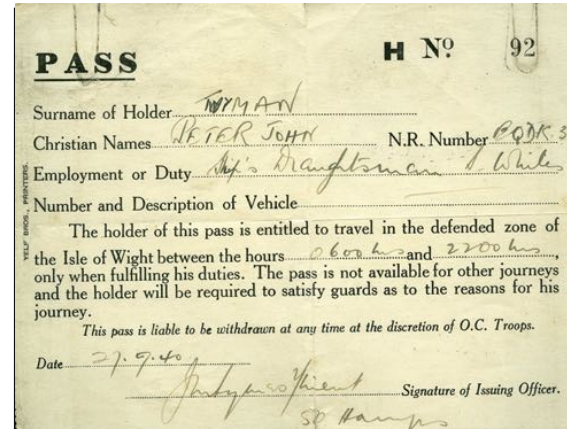
Phoebe Brannon and her family

What was I used for?

To celebrate her being a nurse

Where am I now?

Carisbrooke Castle Museum



MAKING FOR WAR

What am I?

Wartime pass (27th Sept 1940)

What period in history am I from?

World War 1 (1914-1918) and World War 2 (1939-1945)

Where am I connected to?

East Cowes, Isle of Wight

What am I made of?

Paper

Who made or used me?

Peter, a worker at J.S. White's shipyard, whose father had worked there in WW1

What was I used for?

To give him permission to travel in defended zones in Cowes

Where am I now?

Isle of Wight Heritage Services



MAKING FOR WAR

What am I?

Wreckage of a sea plane lighter

What period in history am I from?

World War 1 (1914-1918)

Where am I connected to?

River Hamble, Hampshire

What am I made of?

Wood, metal and canvas

Who made or used me?

Made by local shipbuilder, Thornycroft

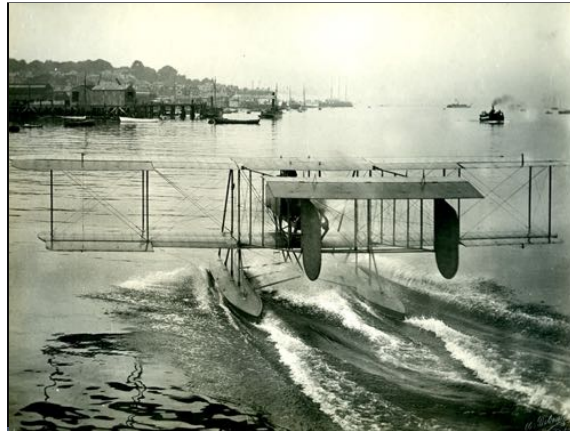
What was I used for?

For carrying seaplanes in tow behind a destroyer ship

Where am I now?

Banks of the River Hamble (IoW Shipwreck Centre)





MAKING FOR WAR

What am I?

Photos of various seaplanes

What period in history am I from?

World War 1 (1914-1918)

Where am I connected to?

English Channel

What am I made of?

Photographic paper

Who made or used me?

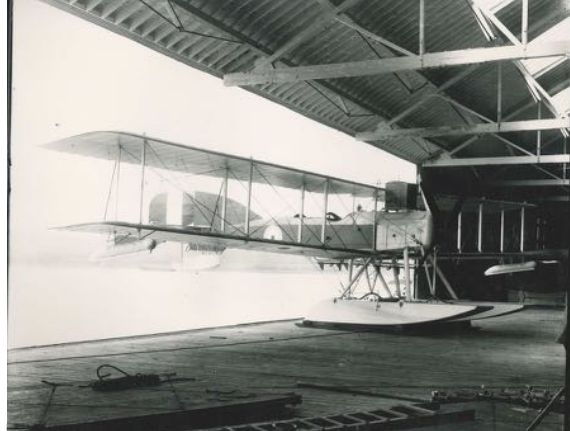
Taken by J.S. Wright's photographer

What was I used for?

To record planes designed and made at Cowes and serving in the Channel

Where am I now?

Isle of Wight Heritage Services



MAKING FOR WAR

What am I?

Photo of a Short seaplane

What period in history am I from?

World War 1 (1914-1918)

Where am I connected to?

Solent off Cowes, Isle of Wight

What am I made of?

Photographic paper

Who made or used me?

Taken by S.E. Saunders' photographer

What was I used for?

To record a plane designed and made at Cowes

Where am I now?

Isle of Wight Heritage Services



UNDER THE WAVES

What am I?

Artefacts from the HMS Velox shipwreck

What period in history am I from?

World War 1 (1914-1918)

Where am I connected to?

Close to Nab Tower, Solent

What am I made of?

Various materials

Who made or used me?

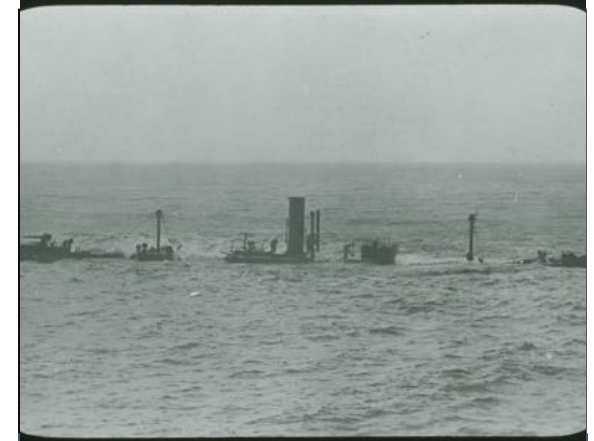
Used by the crew on board patrolling the English Channel

What was I used for?

For daily lives before the ship was hit by a mine laid by a German submarine and sank with all crew rescued

Where am I now?

Shipwreck Centre



UNDER THE WAVES

What am I?

Photo of SS War Knight

What period in history am I from?

World War 1 (1914-1918)

Where am I connected to?

New York, USA

What am I made of?

Photographic paper

Who made or used me?

Taken by a photographer after collision with an American tanker on way from New York

What was I used for?

To record her being towed. Shortly after she was struck by a mine at the Needles.

Where am I now?

Isle of Wight Heritage Services





BUILDING UP TO WAR

What am I?

Artefacts from the A1 submarine wreck

What period in history am I from?

Pre-World War 1 (1902-1911)

Where am I connected to?

Barrow in Furness, UK

What am I made of?

Metal

Who made or used me?

Built by Vickers at Barrow for the Royal Navy

What was I used for?

Based in Portsmouth and one of the earliest submarines. Sank twice with entire crew drowned

Where am I now?

IoW Shipwreck Centre



BUILDING UP TO WAR

What am I?

Photographs of troops on the Island

What period in history am I from?

Pre-World War 1 (1890-1914)

Where am I connected to?

Sandown, Isle of Wight

What am I made of?

Photographic paper

Who made or used me?

Taken by a local photographer called James Dore

What was I used for?

To record military regiments and local people who served in them during training

Where am I now?

Isle of Wight Heritage Services



UNFINISHED BUSINESS (WW2)

What am I?

Two shell cases

What period in history am I from?

World War 2 (1939-1945)

Where am I connected to?

Gdynia, Poland

What am I made of?

Metal

Who made or used me?

Polish naval crew on board ORP Blyskawicka

What was I used for?

To fire at German bombers during a raid on Cowes in May 1942

Where am I now?

Isle of Wight Heritage Services



UNFINISHED BUSINESS (WW2)

What am I?

Airborne lifeboat

What period in history am I from?

World War 2 (1939-1945)

Where am I connected to?

Arnhem, The Netherlands

What am I made of?

Wood and metal

Who made or used me?

Isle of Wight designer, Uffa Fox, who worked with Saunders in WW1

What was I used for?

To save lives of pilots and soldiers when shot down over water (e.g. during Operation Market Garden)

Where am I now?

Isle of Wight Heritage Services





UNFINISHED BUSINESS (WW2)

What am I?

Photo of man in Home Guard uniform

What period in history am I from?

World War 2 (1939-1945)

Where am I connected to?

Wootton, Isle of Wight

What am I made of?

Photographic paper

Who made or used me?

Taken for C. Archer Brading

What was I used for?

To mark his serving in the Home Guard

Where am I now?

Carisbrooke Castle Museum



THE EARTH MUSEUM



UNFINISHED BUSINESS (WW2)

What am I?

Linen embroidery with names of people

What period in history am I from?

World War 2 (1939-1945)

Where am I connected to?

Cowes, Isle of Wight

What am I made of?

Textile cloth and cotton

Who made or used me?

Women's Royal Naval Service 'Wren'
Doris E. Batchelor

What was I used for?

To remember the people she served with at HMS Vectis during WW2

Where am I now?

Isle of Wight Heritage Services



THE EARTH MUSEUM



PEACE AT LAST?

What am I?

Photo of VE Day celebrations

What period in history am I from?

World War 2 (1939-1945)

Where am I connected to?

Caesars Road, Newport, Isle of Wight

What am I made of?

Photographic paper

Who made or used me?

Local photographer recording wartime activities on the Island

What was I used for?

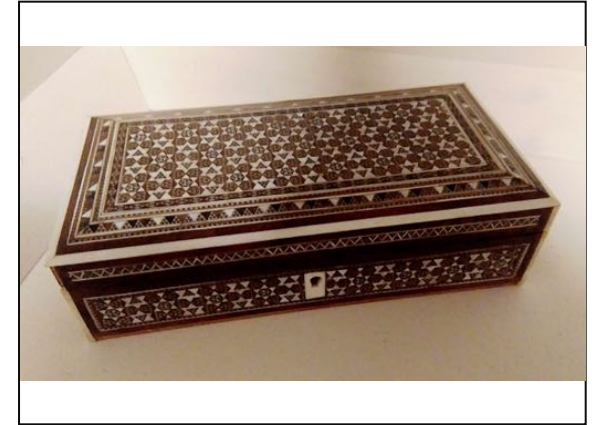
Recording the street party held in May 1945 for children up to 8 years to celebrate the end of war

Where am I now?

Carisbrooke Castle Museum



THE EARTH MUSEUM



PEACE AT LAST?

What am I?

Cigarette case

What period in history am I from?

C20th (1958-1971)

Where am I connected to?

Daman and Diu, India

What am I made of?

Wood (ebony), ivory and metal (silver)

Who made or used me?

Commissioned by the INS Khukri in 1958

What was I used for?

As a gift to J.S. White at Cowes for building the Khukri for the Indian Navy. The Khukri sank in 1971 during the Indo-Pakistani Naval War

Where am I now?

Isle of Wight Heritage Services



THE EARTH MUSEUM