

War and Peace Island KS3 History Explorer Cards

- Print this document onto A3 card
- Cut out the individual object cards and laminate them
- Use them to support learning activity in the classroom – either instead of the digital map or as a complementary activity
- These cards can be used, for example, to play the War and Peace Island game as an alternative to using the digital map
- Other suggested activities:
 - Students work in small groups (or mini museums)
 - Share out the cards across the groups
 - Each group studies their own object selection, including looking at the place they are connected to on the Island/ world using maps and the chronology
 - Each group tells a short story about their objects in any creative form (including an exhibition); they might perhaps be able to borrow objects from other museum groups as part of this exercise – their creative outcomes are presented to the class



For Isle of Wight Museums and Schools

Supported using public funding by





GLOBAL WAR OF EMPIRES

What am I?

Artefacts from the SS Polo shipwreck

What period in history am I from?

World War 1 (1914-18)

Where am I connected to?

Off St Catherine's Head, Isle of Wight

What am I made of?

Various materials

Who made or used me?

Used by the crew on board SS Polo

What was I used for?

Their daily lives at sea

Where am I now?

IoW Shipwreck Centre

Polo was a cargo ship travelling between Hull and Alexandria, laden with coal and general goods. Egypt at this time was a protectorate of Britain. On February 12th 1918, a German U-boat submarine fired its torpedoes and sank the SS Polo.

Three lives were lost.



1988.134

GLOBAL WAR OF EMPIRES

What am I?

Memorial plaque

What period in history am I from?

World War 1 (1914-1918)

Where am I connected to?

Gallipoli, Turkey

What am I made of?

Metal (bronze)

Who made or used me?

The family of George Guy

What was I used for?

To remember his life and sacrifice

Where am I now?

Carisbrooke Castle Museum

Known as 'Dead Man's Penny', these plaques were issued to families of men killed in WW1. George was killed at Gallipoli. The aim of the allied troops who landed in August 1915 had been to drive back the Turkish army, but they were well prepared to defend their home.



GLOBAL WAR OF EMPIRES

What am I?

Cooking pot from the SS Mendi

What period in history am I from?

World War 1 (1917)

Where am I connected to?

Lagos, Nigeria

What am I made of?

Copper and tin

Who made or used me?

The chef who cooked for black South African troops killed when the Mendi sank on the way to the Western Front

What was I used for?

To help feed 1,000 men on board

Where am I now?

IoW Shipwreck Centre

There were 1,000 men on board the Mendi in February 1917, of which 823 were black South African troops travelling to serve in France. 646 people were killed when the Mendi sank on 21st February off the Isle of Wight.



GLOBAL WAR OF EMPIRES

What am I?

Photograph of Tone Horikawa

What period in history am I from?

World War 1 (1914-18)

Where am I connected to?

Tokyo, Japan

What am I made of?

Photographic paper

Who made or used me?

For Tone and her husband John Milne

What was I used for?

A record of Tone working on the Isle of Wight with her husband, where she had to wait until after the war ended to return to Japan after John died

Where am I now?

IoW Shipwreck Centre

Tone Horikawa married an Englishman, John Milne, in Japan and they both retired to the Isle of Wight, setting up an earthquake observatory in Newport. John died just before WW1 began.





LOSS AND GRIEF

What am I?

Frame containing leaves and grass from Prince Maurice of Battenberg tomb

What period in history am I from?

World War 1 (1914-1918)

Where am I connected to?

Ypres, Belgium

What am I made of?

Leaves and grass

Who made or used me?

Princess Beatrice (daughter of Queen Victoria)

What was I used for?

To remember her youngest son killed in WW1

Where am I now?

Carisbrooke Castle Museum

Maurice was the youngest grandson of Queen Victoria and among the first to go to France when war was declared. He was killed at Ypres and these leaves/ grass were sent to his mother.



THE EARTH MUSEUM



LOSS AND GRIEF

What am I?

Saucer from the SS Mendi

What period in history am I from?

World War 1 (1917)

Where I am connected to?

Cape Town, South Africa

What am I made of?

Ceramic

Who made or used me?

Used by crew and soldiers sailing on the Mendi which sank off the Isle of Wight

What was I used for?

As part of a set to drink tea on their voyage to the Western Front

Where am I now?

IoW Shipwreck Centre

SS Mendi was bringing brave soldiers from Britain's African colonies to fight on the Western Front, despite the appalling racism they suffered at home. 21,000 black South African recruits fought for Britain in France during WW1.



THE EARTH MUSEUM



1988.134

LOSS AND GRIEF

What am I?

Memorial plaque

What period in history am I from?

World War 1 (1914-1918)

Where am I connected to?

Gallipoli, Turkey

What am I made of?

Metal (bronze)

Who made or used me?

The family of George Guy

What was I used for?

To remember his life and sacrifice

Where am I now?

Isle of Wight Heritage Services

Known as 'Dead Man's Penny', these plaques were issued to families of men killed in WW1. George was killed at Gallipoli. The aim of the allied troops who landed in August 1915 had been to drive back the Turkish army, but they were well prepared to defend their home.



THE EARTH MUSEUM



LOSS AND GRIEF

What am I?

10 Rupee note (piece of)

What period in history am I from?

World War 1 (1917)

Where am I connected to?

Kolkata, India

What am I made of?

Paper

Who made or used me?

Crew of the cargo ship, SS Camberwell, which sank off the Isle of Wight

What was I used for?

For use as money when arriving at their destination in India to trade

Where am I now?

IoW Shipwreck Centre

During WW1 trade between Britain and India was an important source of goods and materials. Camberwell was travelling with cargo from Middlesbrough to India when sank. 7 men with Indian heritage lost their lives.



THE EARTH MUSEUM



WOMEN AND WAR

What am I?

Photograph of workers at Saunders Roe

What period in history am I from?

World War 1 (1914-1918)

Where am I connected to?

East Cowes, Isle of Wight

What am I made of?

Photographic paper

Who made or used me?

A local photographer

What was I used for?

To record the work of women on the Island

Where am I now?

Carisbrooke Castle Museum

These women worked at Saunders' yard helping build boats and aircraft. Their jobs may have included applying plastic lacquer to fabric covered aircraft. At least 2 women died from fumes and many others suffered fainting, nausea and headaches.



WOMEN AND WAR

What am I?

Hull test models and photo of Blanche Coules Thornycroft

What period in history am I from?

World War 1 (1914-1918)

Where am I connected to?

Dover, UK

What am I made of?

Wood

Who made or used me?

Used by Blanche Coules Thornycroft

What was I used for?

To design ships like HMS Shakespeare which patrolled Dover during WW1

Where am I now?

Classic Boat Museum

Thornycroft was as shipbuilders on Southampton Water and the family lived near Bembridge on the Island. Blanche was daughter of the owner and became renowned as one of only a few women naval architects/ engineers of WW1.



WOMEN AND WAR

What am I?

Photograph of Phoebe Brannon
What period in history am I from?

World War 1 (1914-1918)

Where am I connected to?

Egypt

What am I made of?

Photographic paper

Who made or used me?

Phoebe Brannon and her family

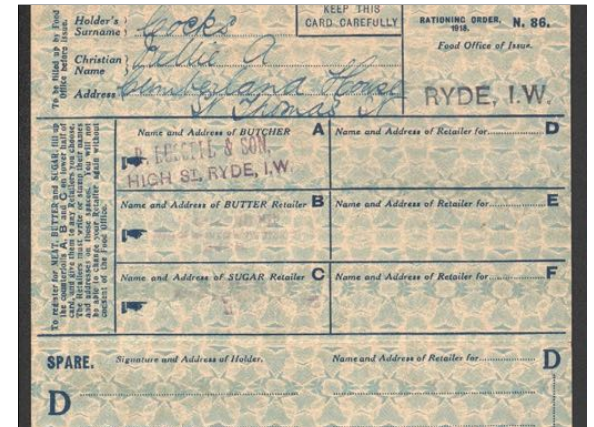
What was I used for?

To celebrate her being a nurse

Where am I now?

Carisbrooke Castle Museum

Phoebe began her nurses training in October 1914 at Royal Isle of Wight County Hospital, Ryde. By 1917 she was part of the Queen Alexandra's Imperial Military Nursing Service Reserve. Between 1917 and 1921 she worked at military hospitals in Nottingham and Egypt.



IMPACT AT HOME

What am I?

Ration books

What period in history am I from?

World War 1 (1914-1918)

Where am I connected to?

Ryde, Isle of Wight

What am I made of?

Paper

Who made or used me?

Cecil and Nellie Cocks

What was I used for?

To buy meat, butter and sugar

Where am I now?

Carisbrooke Castle Museum

During WW1 Britain suffered food shortages as ships importing food from across the world were targeted by German submarines, and agricultural workers were serving in the army. Ration cards were distributed to individuals and could only be used in certain shops to manage supply routes.





IMPACT AT HOME

What am I?

Postcard from Private E. Warren

What period in history am I from?

World War 1 (1914-1918)

Where am I connected to?

Boulogne, France

What am I made of?

Paper

Who made or used me?

Private E. Warren

What was I used for?

Thanking H. Munroe at J.S. White for sending cigarettes to France

Where am I now?

Isle of Wight Heritage Services

Munroe worked at J.S White's shipyard on the Isle of Wight and perhaps Private Warren had too before the war. Warren was in the Grenadier Guards, and used a pre-paid postcard that was sent with the cigarette supplies to allow a soldier to reply.



IMPACT AT HOME

What am I?

Photographs of the Isle of Wight Rifles

What period in history am I from?

World War 1 (1914-1918)

Where am I connected to?

Yaverland, Isle of Wight

What am I made of?

Photographic paper

Who made or used me?

A local photographer

What was I used for?

To record how the Rifles volunteers trained as soldiers for defence

Where am I now?

Carisbrooke Castle Museum

The Isle of Wight Rifle Volunteers Corp was a reserve territorial unit named in honour of Princess Beatrice and was largely formed of local men. They trained as soldiers in their spare time and in late July 1915 sailed to reinforce allied British armies in Turkey.



IMPACT AT HOME

What am I?

Fireman's Helmet

What period in history am I from?

World War 1 (1914-1918)

Where am I connected to?

Freshwater, Isle of Wight

What am I made of?

Leather

Who made or used me?

A Rover Scout

What was I used for?

Worn for protection while training to fight fires on the Island

Where am I now?

Isle of Wight Heritage Services

The helmet is of a very small size so is likely to have been worn by a teenage boy. The Freshwater Rover Scouts were well known for their role in supporting the Island's adult volunteer fire service on the Island in the early C20th, including during WW1.



MEDICAL CARE

What am I?

Photo of Royal Navy hospital ship, Liberty

What period in history am I from?

World War 1 (1914-1918)

Where am I connected to?

Dardanelles, Turkey

What am I made of?

Photographic paper

Who made or used me?

A photographer recording wartime activities

What was I used for?

To record how the Liberty was loaned by a private owner on the Solent to the RN

Where am I now?

Isle of Wight Heritage Services

The large steam vessel and its medical crew took part in the Dardanelles Campaign and later became a hospital carrier.





MEDICAL CARE

What am I?

Embroidered cushion cover

What period in history am I from?

World War 1 (1914-1918)

Where am I connected to?

Gaza, West Asia

What am I made of?

Textile cloth and cotton

Who made or used me?

A soldier called Charles recovering in a hospital

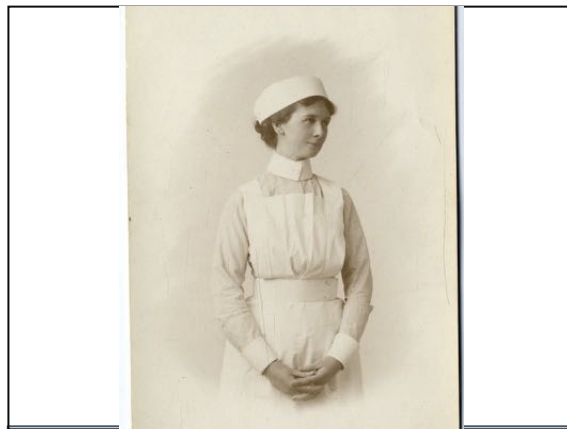
What was I used for?

To commemorate the Isle of Wight Rifles campaign in Egypt 1915-16

Where am I now?

Carisbrooke Castle Museum

Possibly made by Charles while he was in hospital recovering after the Battle of Gaza. At the top of the Rifles' insignia are the words 'South Africa 1900', a battle honour awarded for IW Rifles who volunteered for the Boer War.



MEDICAL CARE

What am I?

Photograph of Phoebe Brannon

What period in history am I from?

World War 1 (1914-1918)

Where am I connected to?

Egypt

What am I made of?

Photographic paper

Who made or used me?

Phoebe Brannon and her family

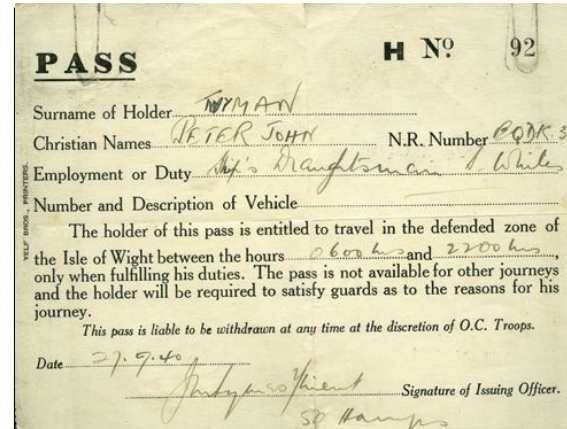
What was I used for?

To celebrate her being a nurse

Where am I now?

Carisbrooke Castle Museum

Phoebe began her nurses training in October 1914 at Royal Isle of Wight County Hospital, Ryde. By 1917 she was part of the Queen Alexandra's Imperial Military Nursing Service Reserve. Between 1917 and 1921 she worked at military hospitals in Nottingham and Egypt.



MAKING FOR WAR

What am I?

Wartime pass (27th Sept 1940)

What period in history am I from?

World War 1 (1914-1918) and World War 2 (1939-1945)

Where am I connected to?

East Cowes, Isle of Wight

What am I made of?

Paper

Who made or used me?

Peter, a worker at J.S. White's shipyard, whose father had worked there in WW1

What was I used for?

To give him permission to travel in defended zones in Cowes

Where am I now?

Isle of Wight Heritage Services

Peter was a draughtsman (technical drawing) at J.S. White's shipyards like his father before him, who had worked there since 1910, including throughout WW1.



MAKING FOR WAR

What am I?

Wreckage of a sea plane lighter

What period in history am I from?

World War 1 (1914-1918)

Where am I connected to?

River Hamble, Hampshire

What am I made of?

Wood, metal and canvas

Who made or used me?

Made by local shipbuilder, Thornycroft

What was I used for?

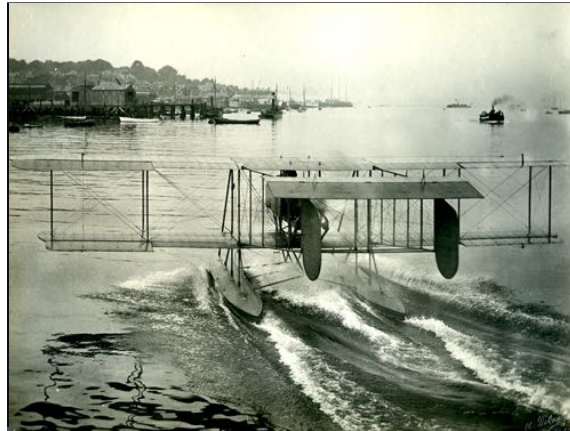
For carrying seaplanes in tow behind a destroyer ship

Where am I now?

Banks of the River Hamble (IoW Shipwreck Centre)

The remains of a steel WW1 seaplane lighter. Designed and built locally, they were tested at nearby Calshot in 1917, before the Admiralty commissioned more. These became the first type of aircraft carrier.





MAKING FOR WAR

What am I?

Photos of various seaplanes

What period in history am I from?

World War 1 (1914-1918)

Where am I connected to?

English Channel

What am I made of?

Photographic paper

Who made or used me?

Taken by J.S. Wright's photographer

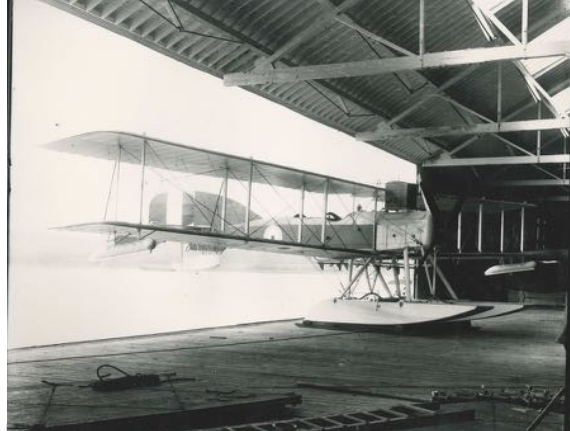
What was I used for?

To record planes designed and made at Cowes and serving in the Channel

Where am I now?

Isle of Wight Heritage Services

J.S. White's Aircraft Department at the Somerton Works on the Isle of Wight designed and made various planes during WW1. They served in Belgium and France, and were used for maritime observer missions over the North Sea. 4 were sent to Gallipoli.



MAKING FOR WAR

What am I?

Photo of a Short seaplane

What period in history am I from?

World War 1 (1914-1918)

Where am I connected to?

Solent off Cowes, Isle of Wight

What am I made of?

Photographic paper

Who made or used me?

Taken by S.E. Saunders' photographer

What was I used for?

To record a plane designed and made at Cowes

Where am I now?

Isle of Wight Heritage Services

This photograph shows a Short seaplane built by S.E. Saunders, a boat and aircraft company based at East Cowes. The photograph was taken on 17th March 1917.



UNDER THE WAVES

What am I?

Artefacts from the HMS Velox shipwreck

What period in history am I from?

World War 1 (1914-1918)

Where am I connected to?

Close to Nab Tower, Solent

What am I made of?

Various materials

Who made or used me?

Used by the crew on board patrolling the English Channel

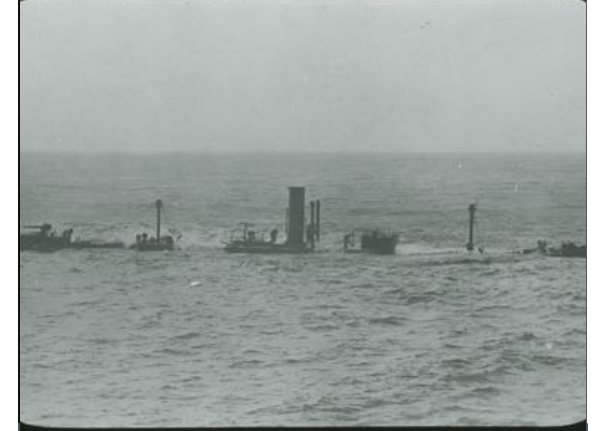
What was I used for?

For daily lives before the ship was hit by a mine laid by a German submarine and sank with all crew rescued

Where am I now?

Shipwreck Centre

One of the earliest Royal Navy ships to be powered by a steam turbine engine. Returning from a patrol in the English Channel on 25th October 1915, it hit a mine that blew off its stern.



UNDER THE WAVES

What am I?

Photo of SS War Knight

What period in history am I from?

World War 1 (1914-1918)

Where am I connected to?

New York, USA

What am I made of?

Photographic paper

Who made or used me?

Taken by a photographer after collision with an American tanker on way from New York

What was I used for?

To record her being towed. Shortly after she was struck by a mine at the Needles.

Where am I now?

Isle of Wight Heritage Services

Taken after it hit the American tanker O.B. Jennings while travelling from New York. She was then struck by a mine near the Needles while being towed, and sunk by friendly gunfire.





BUILDING UP TO WAR

What am I?

Artefacts from the A1 submarine wreck

What period in history am I from?

Pre-World War 1 (1902-1911)

Where am I connected to?

Barrow in Furness, UK

What am I made of?

Metal

Who made or used me?

Built by Vickers at Barrow for the Royal Navy

What was I used for?

Based in Portsmouth and one of the earliest submarines. Sank twice with entire crew drowned

Where am I now?

IoW Shipwreck Centre

HMS A1 was the Royal Navy's first British-designed submarine built and launched in 1902. Accidentally sunk in the Solent in 1904 while carrying out a practice attack. Sank again in 1911.



BUILDING UP TO WAR

What am I?

Photographs of troops on the Island

What period in history am I from?

Pre-World War 1 (1890-1914)

Where am I connected to?

Sandown, Isle of Wight

What am I made of?

Photographic paper

Who made or used me?

Taken by a local photographer called James Dore

What was I used for?

To record military regiments and local people who served in them during training

Where am I now?

Isle of Wight Heritage Services

James Dore was a photographer who lived and worked in Sandown. He was one of the earliest photographers on the Island, capturing various views of everyday life.



UNFINISHED BUSINESS (WW2)

What am I?

Two shell cases

What period in history am I from?

World War 2 (1939-1945)

Where am I connected to?

Gdynia, Poland

What am I made of?

Metal

Who made or used me?

Polish naval crew on board ORP Blyskawicka

What was I used for?

To fire at German bombers during a raid on Cowes in May 1942

Where am I now?

Isle of Wight Heritage Services

From the guns of ORP Blyskawicka and found on the deck of this ship after the German bombing raid of May 1942 which killed 70 people in Cowes, and wounded/ made homeless many more. Ship built by J.S. White in Cowes.



UNFINISHED BUSINESS (WW2)

What am I?

Airborne lifeboat

What period in history am I from?

World War 2 (1939-1945)

Where am I connected to?

Arnhem, The Netherlands

What am I made of?

Wood and metal

Who made or used me?

Isle of Wight designer, Uffa Fox, who worked with Saunders in WW1

What was I used for?

To save lives of pilots and soldiers when shot down over water (e.g. during Operation Market Garden)

Where am I now?

Isle of Wight Heritage Services

Combat aircraft carried lifeboats that could be dropped by parachute in an emergency. In 1945, one was used to rescue soldiers dropped in water at Arnhem during Market Garden





UNFINISHED BUSINESS (WW2)

What am I?

Photo of man in Home Guard uniform

What period in history am I from?

World War 2 (1939-1945)

Where am I connected to?

Wootton, Isle of Wight

What am I made of?

Photographic paper

Who made or used me?

Taken for C. Archer Brading

What was I used for?

To mark his serving in the Home Guard

Where am I now?

Carisbrooke Castle Museum

Home Guard was an armed citizen militia operational from 1940 to 1944.

Had 1.5 million local volunteers otherwise ineligible for military service (e.g. too young/ old). Acted as a secondary defence in case of invasion from Nazi Germany.



UNFINISHED BUSINESS (WW2)

What am I?

Linen embroidery with names of people

What period in history am I from?

World War 2 (1939-1945)

Where am I connected to?

Cowes, Isle of Wight

What am I made of?

Textile cloth and cotton

Who made or used me?

Women's Royal Naval Service 'Wren'

Doris E. Batchelor

What was I used for?

To remember the people she served with at HMS Vectis during WW2

Where am I now?

Isle of Wight Heritage Services

This linen embroidery in the form of a square contains the names of Wrens (Women's Royal Naval Service) who served at the shore base of HMS Vectis on the Isle of Wight during WW2.



PEACE AT LAST?

What am I?

Photo of VE Day celebrations

What period in history am I from?

World War 2 (1939-1945)

Where am I connected to?

Caesars Road, Newport, Isle of Wight

What am I made of?

Photographic paper

Who made or used me?

Local photographer recording wartime activities on the Island

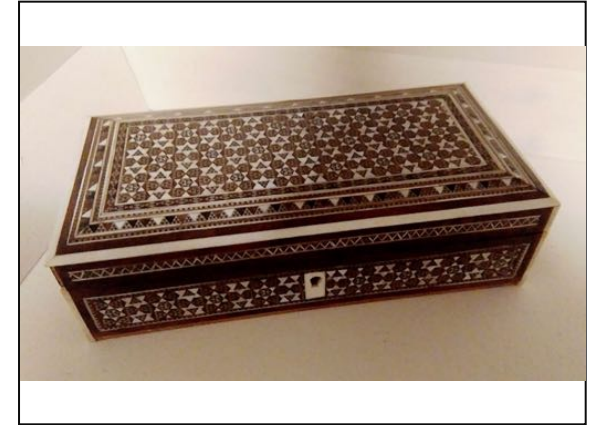
What was I used for?

Recording the street party held in May 1945 for children up to 8 years to celebrate the end of war

Where am I now?

Carisbrooke Castle Museum

Street parties were held across Britain to celebrate the end of WW2 in May 1945. The party shown in the photo took place at Wilver Road end of Caesars Road for children up to 8 years of age.



PEACE AT LAST?

What am I?

Cigarette case

What period in history am I from?

C20th (1958-1971)

Where am I connected to?

Daman and Diu, India

What am I made of?

Wood (ebony), ivory and metal (silver)

Who made or used me?

Commissioned by the INS Khukri in 1958

What was I used for?

As a gift to J.S. White at Cowes for building the Khukri for the Indian Navy.

The Khukri sank in 1971 during the Indo-Pakistani Naval War

Where am I now?

Isle of Wight Heritage Services

This box was given as a gift on handover of the vessel on 16th July 1958. Khukri became the first vessel since WW2 to be sunk by submarine with nearly 200 losses in 1971.

